

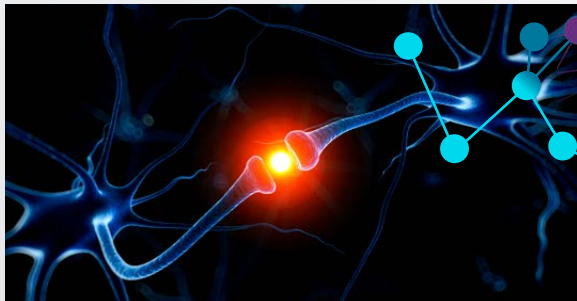
vSolution MATRIX: Networked AV solutions for active learning spaces & training rooms



Flexible active learning with Cynap Pro & Cynap Core Pro

vSolution MATRIX is an AV over IP collaboration solution which uses multiple Cynap Pro / Cynap Core Pro devices to stream video and audio between multiple screens using network infrastructure.

A single feature pack-enabled Cynap Pro unit, designated as the 'main' system in the room, is connected to multiple workstations with either a Cynap Pro or a Cynap Core Pro system installed, creating a system suitable for active learning classrooms and training rooms of all sizes.



Just like in the human brain where synapses are essential for quick processing and transmission of information, Cynap Pro and Cynap Core Pro are unique, powerful, and flexible systems, providing instant access to information of all types from any source.



“

We decided to use vSolution MATRIX because of its flexibility and ease of use. We found that the mirroring capability of other solutions was not as good, and that was a key component for us. The attention to detail that WolfVision have put in gave us a lot of confidence in the product. This room effectively gives us 16 breakout rooms and a lecture theatre all in one space!”

Wayne Buttigieg

Head of Infrastructure and Media Services
London Business School



++ Video ++

London
Business
School

Networked AV solution using Cynap Pro & Cynap Core Pro

Stream video & audio
between multiple
screens using network
infrastructure

Ideal for classrooms,
training rooms and
collaboration spaces,
of any size

Simple drag & drop
interface with flexible
setup & control
options

No additional encoding/
decoding hardware
required – scalable,
cost-effective solution

Configuration example

HDMI
USB

Cynap Pro



Cat6 LAN



Cat6 LAN

1GB Ethernet Switch IGMP v.2

Cat6 LAN

HDMI
USB

Cynap Core Pro



Flexible working & learning

Simple drag & drop of multiple screens



A simple drag and drop user control interface enables content to be moved effortlessly between different screens. The 'Room View' is used to control pushing and pulling of content between displays, and flexible settings enable up to 40 workstations to be configured using either names, numbers or colours, exactly matching the actual layout of individual learning spaces.

Multi-functional workspaces



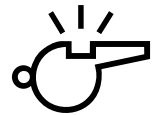
Individual and multiple workstations can operate independently of the main central station, enabling room usage to be maximised. Workstations can be used separately for breakout groups, or for small groups working independently during times when the entire room is not being used. If enabled, Groupwork Mode also enables direct station-to-station streaming of content.

Reduced hardware, complexity & costs

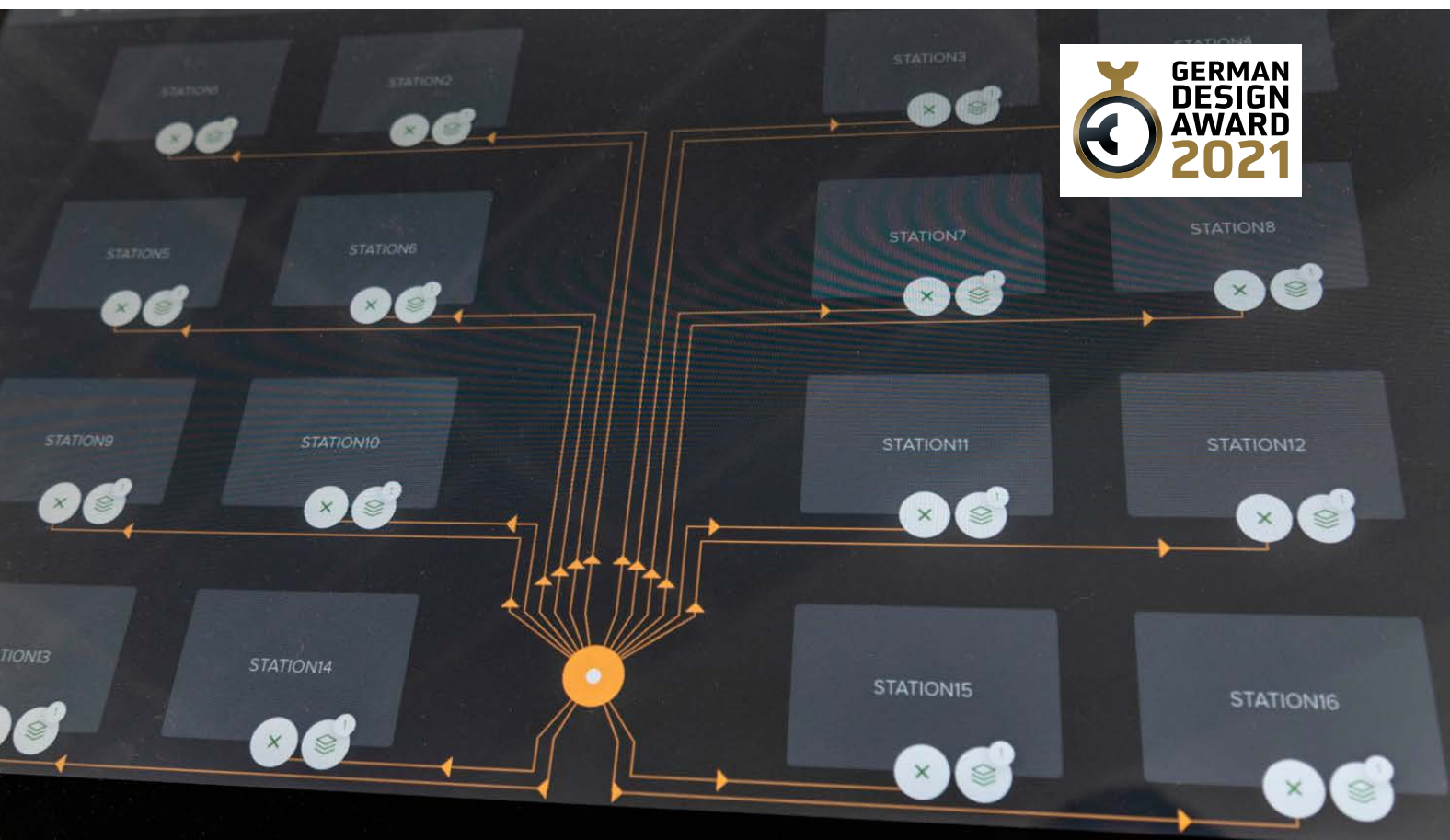


When streaming content between multiple screens, all processing is performed by the Cynap Pro and Cynap Core Pro systems, eliminating the need for additional encoding/decoding hardware, and helping to reduce the overall complexity of the installed system.

Connecting stations using Coaching Mode

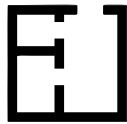


Coaching Mode enables a teacher or trainer to connect two separate stations directly without sharing content onto the main display screen in the room. All content including any annotations etc. are displayed on both the connected screens.



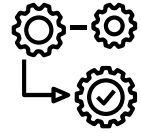
System advantages

Multiple room layout templates



For installations using multiple room layouts, up to 5 Room View templates can be configured and stored for use when required. Up to 5 pre-defined groups can also be set up to suit environments where content needs to be pushed to specific groups of display screens.

Easy remote administration



Multiple Cynap Pro / Cynap Core Pro components of the vSolution MATRIX system are easily set up, managed and updated remotely using our free-of-charge vSolution Link Pro software.

App-free, dongle-free working & learning



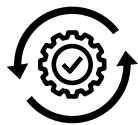
Competitor solutions require the use of apps, dongles, and additional software. Only WolfVision offers a true app-free, dongle-free, hassle-free learning environment, providing a consistent user experience for all participants.

Professional advice, proven technology



With hundreds of successful vSolution MATRIX active learning classroom installations already, you can be confident in receiving expert advice, service, and support for your chosen solution from our experienced, professional, worldwide team.

Free firmware updates, no hidden costs!



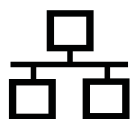
When installing up to 40 workstations, it's a key benefit that WolfVision does not charge subscription fees or apply per workstation recurring licensing costs. All firmware updates are free of charge, maximising your ROI and helping to futureproof your system.

File sharing made easy!



At the start of active learning classes, teachers can distribute files easily with either all or selected workstations as required. This ensures that clear instructions can be provided to students at the start of each session.

Implementation advantages



The ability to configure three separate networks (ie. BYOD WiFi, control and admin, and internet service) offers significant advantages when planning your classroom or training room setup.

Enterprise level security



Built on a secure, unmodifiable Linux platform with 100% data encryption, and user-configurable security features, enables vSolution MATRIX to satisfy the security requirements of every organisation.

New version vSolution MATRIX: More powerful, even easier to use

Next generation performance



We've added even more performance to vSolution MATRIX enabling the system to handle multiple streams. This means that support is now provided for dual main display screens if required. The new version also offers increased flexibility and improved operation when using the 'Room View.'

Support for twin main display screens



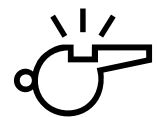
The vSolution COMPOSER feature enables educators to drag and drop content to either left or right-hand display screens. Colour-coded streams and single or dual arrow markings ensure it's easy for everybody to recognise where each stream is routed.

Streamlining room operation

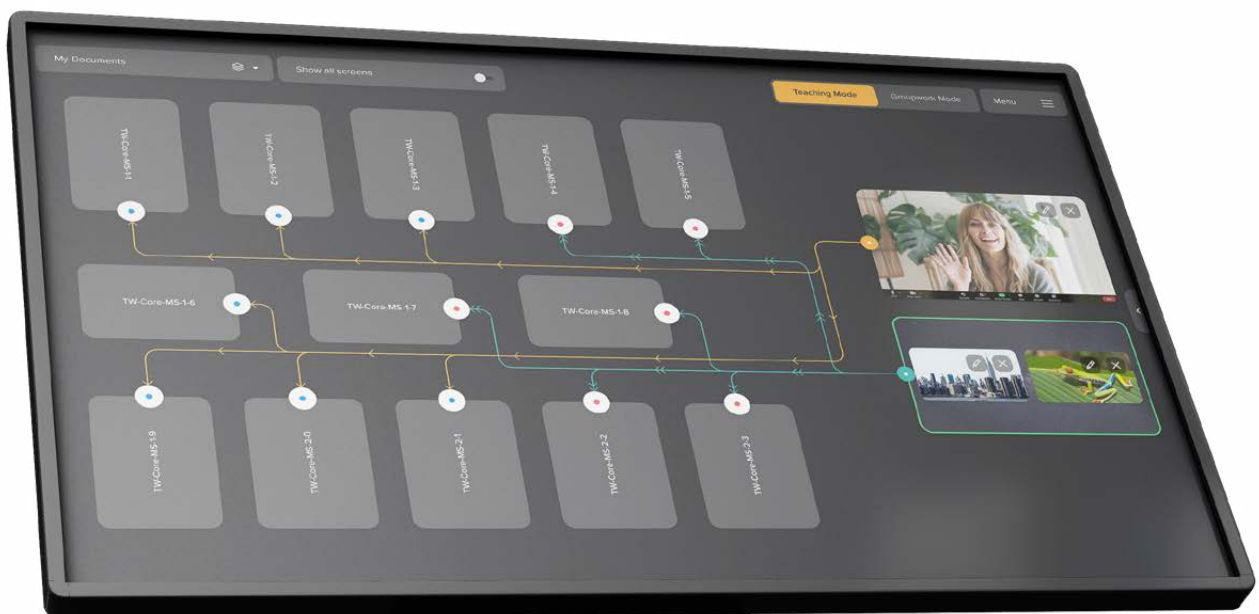


With a 'Room View' that now always shows exactly what content is displayed, and where it is routed, workflows are significantly improved with no need to switch between views to check what is happening on the workstations.

Training support & guided control



The ability to add a second preview screen can be used to provide guided assistance when training new staff. It also enables an additional person to provide support for visiting professors who may be using the classroom for the first time!



Sample Room View configured for twin main display screens, with content easily identified using different colours and either one or two arrows for each stream.



vSolution Cynap Pro: At the centre of modern learning spaces

A powerful all-in-one wireless presentation and collaboration system featuring a media player, web conferencing, recording and streaming, BYOD wireless screen sharing, and annotation functionality, acts as a centrepiece of classrooms and training rooms. This is the 'main station' of our vSolution MATRIX collaboration solution.



Video recording / Lecture capture agent



Full HD local video recording captures all types of content materials, making flexible recording of multi-source, multimedia educational content easier than ever before. The lecture capture integration enables Cynap to also act as a capture agent for Panopto and other compatible video management platforms.



Send files easily to multiple stations



Share your files easily from the cloud, network drives or mobile devices. Simply drag and drop to the required workstations – you can even configure files to open automatically on receipt.

Webcasting: Efficient knowledge sharing



Content can be streamed for live or on-demand viewing to YouTube, Facebook Live etc. Students or work colleagues on the same network as the presenter can also receive and record a stream to their mobile devices using our vSolution App.

Q-SYS user control interface integration



We've partnered with Q-SYS to offer a Q-SYS User Control Interface integration for Cynap Pro. The solution can be configured to provide Q-SYS room control, alongside our wireless presentation and collaboration functionality.

Cynap Core Pro: Workstation essentials for active learning

Cynap Core Pro provides the core essential features you need for effective collaboration, and wireless presentation. Installed on each workstation (higher spec Cynap Pro systems can also be used) this key component of our vSolution MATRIX active learning classroom collaboration solution ensures an outstanding wireless working environment for all students.



App-free, dongle-free screen sharing!



Connect and share your screen using the wireless technology that's built into your own mobile device. Our wireless BYOD solution suits all iOS, iPadOS, Android, Chrome OS, Windows and Mac devices – with full support for AirPlay, Chromecast, and Miracast screen mirroring.

Group annotation on a single document



It's easy to create extra content material using our digital whiteboard and annotation functionality. Students and teachers can also work together on a single document or other piece of content if required.

Hybrid learning made easy!



Simply use our WolfVision vSolution App on a laptop in BYOM Mode to enable swift wireless connection to Cynap Pro or Cynap Core Pro - plus connected camera, microphones, and speaker peripherals already installed in the classroom. Users can now host web conferences using any conferencing service directly from their own laptop.

Or use our multi-platform web conferencing feature to run Zoom, MS Teams and other Web-RTC-based services directly on the Cynap device itself, using simple standardised workflows, controlled via any laptop, smartphone or tablet.

WebRTC ZOOM

vSolution App / vSolution Cast

Get more from your systems

WolfVision systems and solutions do not require the installation of buttons, apps or software before they can be used. However, there are many additional useful features and functions that are available when using the following tools.

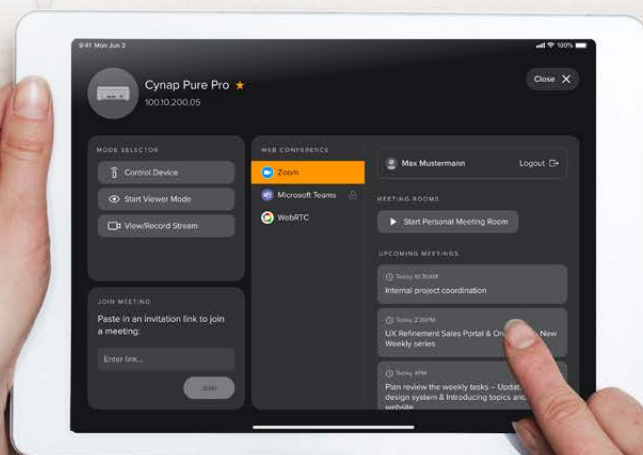
vSolution App

- Receive and record a stream of presentation and lecture content from a Cynap system onto your own mobile device.
- For Android and iOS/iPadOS users in network environments where the mDNS / Bonjour services (device discovery protocols) have been disabled, the app enables users to discover Cynap family systems manually, enabling connection via AirPlay or Chromecast.
- Presenters can connect to a WolfVision Cynap Pro and then use the intuitive touch-screen interface to control the multi-screen active learning environment wirelessly from their own mobile device.
- vSolution App is used when hosting Cynap BYOM (bring your own meeting) web meetings on a laptop (Win/macOS). It is also used to control Zoom, MS Teams or WebRTC web meetings running directly on a Cynap system.

NEW

vSolution Cast

- 4K screen mirroring from Windows laptops to Cynap family systems
- When screen mirroring from a Windows laptop to Cynap systems, either a single window or the entire desktop can be shared onto the display screen.
- Screen mirroring to all Cynap systems for Windows users who do not have built-in Miracast, or wish to use the additional functionality.



vSolution Link Pro

Remote management software

vSolution Link Pro software is license-free, and is available to download free of charge. It enables remote organisation and management of all vSolution Cynap family systems across multiple locations. It includes the following features and functionality.

vSolution Link Pro

- Local administrator setup, device assignment
- Allocation of tags and location information for convenient device organisation and management
- Updating firmware for either single or multiple Cynap systems
- Sending admin messages to be displayed on selected Cynap systems
- Settings templates can be created for easy backup, restore, and rollout to multiple devices
- Monitoring system status
- Scheduled automation of tasks such as backup, power cycling or updating of systems
- User interface accessible via any HTML5 compatible internet browser
- Available for Windows Server, Windows desktop, and macOS
- vSolution Link Pro is also available for installation on a cloud-based virtual server (Microsoft Azure or AWS). WolfVision remote management software can now be securely accessed from any location, and is suitable for managing up to 5,000 WolfVision systems across multiple locations.



Cynap systems specifications

| Features | Cynap Pro ("Main Station") | Cynap Core Pro |
|----------------------------------------------------------------------------|-------------------------------------------------------------------------------------------------------------------------------------------------------------|-----------------------------------------------------------------------------------------------------------------------------|
| Operating system | Linux | Linux |
| Output resolution | Up to 4K UHD: 2160p60 (4.2.0), 2160p30 (4.4.4), 1080p60 (4.4.4), 1080p30 (4.4.4), 720p60 (4.4.4), | 2160p30, 1080p60/30 (4.4.4), 720p |
| Supported devices for wireless mirroring (up to 4K depending on device) | iOS, iPadOS, Android, Windows, macOS, Chrome OS | iOS, iPadOS, Android, Windows, macOS, Chrome OS |
| Supported mirroring protocols | AirPlay, Miracast (Peer-to-Peer and MICE), Chromecast, vSolution Cast | AirPlay, Miracast (Peer-to-Peer and MICE), Chromecast, vSolution Cast |
| vSolution MATRIX / Networked AV | Yes, main station and client station (streaming over IP / AV network) | Yes, client station (streaming over IP / AV network) |
| Q-SYS User Control Interface (UCI) integration option | Yes | Yes |
| Media Player: Supported image file formats (image, document, video, audio) | JPEG, BMP, PNG, PDF, DOCX, PPTX, XLSX, Text, HTML, AVI, WMV, MOV, MP4, DivX, MKV, M4V, OGV, MP3, WMA, MKA, OGA, OGG | JPEG, BMP, PNG, PDF, DOCX, PPTX, XLSX, Text, HTML, AVI, WMV, MOV, MP4, DivX, MKV, M4V, OGV, MP3, WMA, MKA, OGA, OGG |
| Touchback functionality | Yes, for Windows devices (Miracast & vSolution Cast) | Yes, for Windows devices (Miracast & vSolution Cast) |
| Max. number of on-screen windows | 4 | 4 |
| vSolution COMPOSER (dual screen content management) | Yes | - |
| Local streaming | Yes (Unicast/ Multicast), RTP, RTSP | - |
| Webcasting (YouTube, Facebook etc.) | Yes | Yes, via optional Feature Pack |
| Local video recording | Yes, (360p, 540p, 720p or 1080p, up to 30fps), MP4-container with codec H.264, video file extension *.mp4 (can be copied onto connected USB storage device) | Yes, via optional Feature Pack |
| Capture Agent for Panopto & other compatible platforms | Yes | Yes, via optional Feature Pack |
| Cloud services | Yes, Google Drive, Dropbox, Jianguoyun, OneDrive, WebDAV | Yes, Google Drive, Dropbox, Jianguoyun, OneDrive, WebDAV |
| Microsoft 365 integration | Yes (Active Microsoft 365 account required) | Yes (Active Microsoft 365 account required) |
| vSolution Meeting room booking tool (Microsoft 365/Google Calendar) | Yes | Yes |
| Access to network drives | Yes | Yes |
| Whiteboard and annotation | Yes | Yes |
| Protected/Open presentation modes | Yes | Yes |
| Multi-platform web conferencing | Yes, Zoom, Microsoft Teams, WebRTC | Yes, Zoom, Microsoft Teams, WebRTC |
| BYOM (bring your own meeting) web conferencing | Yes | Yes |
| vSolution Link Pro remote administration software | Yes, Cloud & on premise | Yes, Cloud & on premise |
| Encrypt and save personal user settings | Yes, save onto USB stick | Yes, save onto USB stick |
| Integrated web browser | Yes, with customisable homepage and bookmarks | Yes, with customisable homepage and bookmarks |
| Digital signage function and screensaver | Yes | Yes |
| Peripheral device control | Yes | Yes |
| Video input | HDMI x2 (HDMI with HDCP 1.4), (additional optional HDMI In x1 via third party USB framegrabber) | HDMI x1, (additional optional HDMI In x1 via third party USB framegrabber) |
| HDBaseT 1.0 input | Optional x1 (only when HDMI input 2 is not in use) | - |
| Video output | HDMI x2 (HDMI with HDCP 1.4), HDMI Out x1 (for vSolution COMPOSER dual screen control and preview monitor) | HDMI x1 |
| HDBaseT 1.0 output | Optional x1 (only when HDMI output 1 is not in use) | - |
| Audio | Line in / Line out (unbalanced, 3.5 mm), HDMI, USB | Line in / Line out (unbalanced, 3.5mm), HDMI, USB |
| USB ports | Rear USB 3.0 x4, front USB 2.0 x2 | Rear USB 3.0 x4, Front USB 2.0 x1 |
| LAN ports | Yes, 2x 1GigE | Yes 2x 1GigE |
| Bluetooth device discovery | Yes | Yes |
| WLAN standards (Wi-Fi 5) | 2.4 and 5 GHz | 2.4 and 5 GHz |
| Network protocols | TCP/IP, FTP, HTTP, HTTPS, SNTP/NTP, SSL, SSH, UDP, LDAP, LDAPS | TCP/IP, FTP, HTTP, HTTPS, SNTP/NTP, SSL, SSH, UDP, LDAP, LDAPS |
| IP configuration | DHCP, Static (IP address, Subnet mask, Default gateway, DNS server), Proxy, Interface priority | DHCP, Static (IP address, Subnet mask, Default gateway, DNS server), Proxy, Interface priority |
| Security authentication for LAN | IEEE 802.1X | IEEE 802.1X |
| Security encryption for wireless WLAN | WEP, WPA2, WPA2 Enterprise or IEEE 802.1X | WEP, WPA2, WPA2 Enterprise or IEEE 802.1X |
| RMS encryption | Yes | Yes |
| External controlling | Remote control, web interface, Visualizer, multi-touch display, room control system, keyboard/mouse, vSolution App | Web interface, Visualizer, multi-touch display, room control system, keyboard/mouse, optional remote control, vSolution App |
| Dimensions (L x W x H) | 428 x 218.7 x 88.2mm (16.85 x 8.6 x 3.47") | 203 x 196 x 67mm (7.99 x 7.71 x 2.63") |
| Power consumption | Max. 105W | Max. 80W |
| Weight | 4500g (9.9lb) | 1840g (4.05lb) |
| Optional accessories | Remote control (free of charge on request) | Optional remote control, 19" rackmount, VESA mount |
| Included accessories | Power cable, antennas, rackmount/table mount kit | Power supply, antennas |
| Free firmware / no license fees | Yes | Yes |
| Limited warranty | 3 years (optional extension to 5 years) | 3 years (optional extension to 5 years) |

vSolution MATRIX specifications

Features

| | |
|---------------------------------------------------------------------|----------------------------------------------------------------------------------------------------------------------------------------------------------------------------------------------------------------------------------------------------------------------------------------------------|
| Description | Feature pack option. Activate on a single Cynap Pro system to enable network AV functionality between multiple Cynap Pro and Cynap Core Pro systems |
| Number of Cynap Pro systems requiring vSolution MATRIX Feature Pack | 1 |
| Maximum number of Cynap Pro / Cynap Core Pro stations in room | 40 |
| Additional encoders / decoders required | No |
| Touchscreen compatibility | Yes |
| Maximum stream resolution | 1080p30 |
| Annotation (Collaboration Mode) | All connected stations can annotate on a single document. Content is moderated, and annotations from specific stations can be shown or hidden as required. |
| Control options | Browser-based control with user-defined Room View layout |
| Customisable Room View layout | Yes, drag & drop configurator with user-defined stations labelled using names, numbers or colours |
| Room View Templates | Yes, up to 5 templates can be saved for installations using multiple room layouts |
| Define groups for screen content sharing | Yes, content sharing to groups from main screen possible for up to 5 pre-defined groups |
| Station Power On / Power Off feature | Yes |
| Show Screen / Show All Screens feature | Yes, status of currently displayed content on a specific screen or all screens can be checked via the Room View |
| Sharing content between multiple screens | Yes, push from the main station to a single client station or to all stations. Pull content from single stations to the main screen |
| Groupwork Mode | Enables individual stations to be used independently, without requiring the operation of the main station. Up to 4 workstations can share content between themselves. |
| Coaching Mode | If activated, instructors can use the Room View to drag and drop content from one station directly to another, without needing to pull the content onto the screen of the Main Cynap. |
| Encrypted file sharing from main station to client stations | Yes, either to a single station or to all stations. Receipt of files is notified by a pop-up. Alternatively the Auto Open File option can be enabled in the settings |
| Network requirements | 1 Gigabit Ethernet |
| IP Multicast Group Address range | 224.3.0.0 to 224.3.0.10 |
| Switch requirement | 1 Gigabit Ethernet, Layer 2 or Layer 3 with enabled IGMP snooping |
| Streaming | H.264 |
| Audio | Audio can be activated on the student stations. |
| Management tools, remote setup, update and management | vSolution Link Pro software (for Windows 10, Windows Server 2012 R2 & 2016, Windows Web Server, macOS) provides admin support including centralised firmware upgrades, checking the state of a Cynap and Wake-on-LAN. A settings profile can be created and distributed to multiple Cynap systems. |
| Security authentication for LAN | IEEE 802.1X |
| Encryption of all wireless content (WLAN) | WEP, WPA2, WPA2 Enterprise or IEEE 802.1X |
| Cynap Pure Receiver option | Optional add-on units can receive a stream from Cynap Pro, enabling multiple additional screens to be added. Also enables extension to additional rooms. A user controlling the session can allow annotations to be made using the Pure Receiver if required. |

Please refer to Cynap Pro & Cynap Core Pro specifications for individual Cynap Pro/Cynap Core Pro system capabilities

Design and specifications subject to change!



Find out more about WolfVision solutions!



Printed in Germany, September 2023

Please contact a WolfVision representative for more information, and experience the powerful performance, versatility, and usability of our unique, flexible systems and solutions for enhancing communication, collaboration, and knowledge sharing across all environments.

Your WolfVision Partner:



WOLFVISION[®]
www.wolfvision.com

Head Office:

WolfVision GmbH
6833 Klaus / Austria
Tel. +43 5523 52250
wolfvision@wolfvision.com

Japan Sales Office
WolfVision Co. Ltd.
Tel. +81 3 6233 9465
japan@wolfvision.com

USA Sales Office
WolfVision, Inc.
Tel. +1 770 931 6802
usa@wolfvision.com

Switzerland Sales Office
WolfVision Switzerland
Tel. +071 571 38 00
switzerland@wolfvision.com

Nordic Sales Office
WolfVision Nordic (Norway)
Tel. +47 9186 9736
nordic@wolfvision.com

UK Sales Office
WolfVision UK Ltd.
Tel. +44 1628 968660
uk@wolfvision.com

Middle East Sales Office
WolfVision Middle East (Dubai)
Tel. +971 5617 40008
middle-east@wolfvision.com

Asia Sales Office
WolfVision Pte. Ltd. (Singapore)
Tel. +65 6636 1268
asia@wolfvision.com

Germany Sales Office
WolfVision GmbH
Tel. +43 5523 52250
germany@wolfvision.com

India Sales Office
WolfVision India
Tel. +91 9136009722
india@wolfvision.com